



Sample Concentration

LIFE SCIENCE

Alpinum Prazision Austria GmbH & Co. KG

– Life Science –

CarnisMD200 Series Sample Concentration

Description

CarnisMD200-1 / CarnisMD200-2 / CarnisMD200-1A sample concentration consists of a base and stand assembly, sample holder and gas distribution system

Features

1. Blowing a large number of samples at one time
2. Easy operation, safe and reliable to use, amount of airflow can be adjusted
3. High precision and wide range of temperature control



CarnisMD200-1



CarnisMD200-1A



CarnisMD200-2

Specification

Model	CarnisMD200-1	CarnisMD200-1A	CarnisMD200-2
Temperature control range	RT.+5°C~150°C	RT.+5°C~150°C	RT.+5°C~150°C
Temp. control accuracy @40~100°C	±0.5°C	±0.5°C	±0.5°C
Temp. control accuracy @100-150°C	±1°C	±1°C	±1°C
Temp. accuracy for blocks @40°C	±0.3°C	±0.3°C	±0.3°C
Display Accuracy	0.1°C	0.1°C	0.1°C
Heating Time (from 40-150°C)	≤30min	≤30min	≤30min
Standard Blocks	1	1	2
Needle Length	150mm	80mm	150mm
Nitrogen Consumption	0~15L/min	0~15L/min	0~15L/min
Dimension (mm)	280 × 240 × 500 mm	280 × 240 × 500 mm	280 × 240 × 500 mm

CarnisKD200

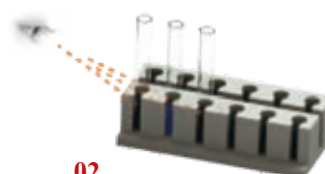
Sample Concentration

Features

1. Professionally-designed block, tester can be observed at the surface location of concentrated samples
2. Depending on the test-tube size and solvent volume they can be individually raised or lowered to the height
3. Easy operation; safe and reliable to use



01
Flow Control Valve



02
CarnisKD200 Visual diagram

Specification

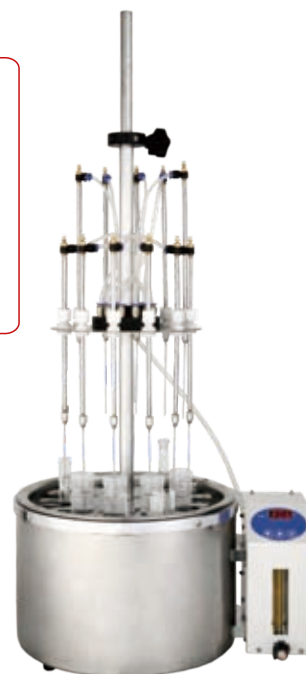
Model	CarnisKD200
Temperature control range	RT.+5°C~150°C
Temperature control discrepancy	≤1°C (RT.+5°C-100°C) / ≤1.5°C (100°C-150°C)
Heating time (from 40 to 150°C)	≤30min
Timer range	1min-99h59min
Maximum input power	400W
Temp. control discrepancy	0.1°C
Needle length	150mm
Capacity	12pcs
Dimensions (mm)	280 × 240 × 500 mm

CarnisWD-12

Sample Concentration

Features

1. Accommodates samples in test tubes 10 to 29mm diameter, Volumes from 1 ml to 50 ml
2. LED display, 12 position, Circular stand turns so each sample is accessible from the front
3. A needle valve adjusts gas flow at each position
4. Water bath provides gentle heat, Temperature setting range: Ambient temperature ~ 99°C
5. All metal parts are made of stainless steel, nickel chromed brass or anodized aluminum



Specification

Model	CarnisWD-12
Temperature control range	RT.+5°C~99°C
Temperature control accuracy	±1°C
Tube size	10-29mm
Beaker / Tube size	<Φ30 mm
Gas flow	0-15L/min
Nitrogen Consumption	330ml/min
Needle Length	128mm
Accommodates samples	12pcs
Inner dimension	Φ260 x 150mm

Ordering information

No.	Code	Description
01	AS-06050-00	CarnisMD200-1, AC220V-240V, 60Hz, 200W
02	AS-06060-00	CarnisMD200-1A, AC220V-240V, 60Hz, 200W
03	AS-06070-00	CarnisMD200-2, AC220V-AC240V, 60Hz, 400W
04	AS-06090-00	CarnisKd200, AC220V-AC240V, 60Hz, 400W
05	AS-06080-00	CarnisWD-12, AC220V-AC240V, 60Hz, 1000W
06	AS-06051-01	150mm Needles (just for CarnisMD200-1 and CarnisMD200-2)
07	AS-06061-01	80mm Needles (just for CarnisMD200-1A)
08	AS-06081-01	150mm Needles (just for CarnisKD200 and CarnisWD-12)
09	AS-06051-02	Flow Control Valve (optional)

Accessories

CarnisMD200 series Sample Concentration (BK19 and BK20 are special for CarnisMD200-1A)

No.	Code	Type	Description	Dimensions(mm)
01	AS-01081-01	BK01	49 x Φ 6mm	96 x 96 x 49mm
02	AS-01081-02	BK02	49 x Φ 7mm	96 x 96 x 49mm
03	AS-01081-03	BK03	25 x Φ 10mm	96 x 96 x 49mm
04	AS-01081-04	BK04	25 x Φ 12mm	96 x 96 x 49mm
05	AS-01081-05	BK05	25 x Φ 13mm	96 x 96 x 49mm
06	AS-01081-06	BK06	12 x Φ 15mm	96 x 96 x 49mm
07	AS-01081-07	BK07	16 x Φ 15mm	96 x 96 x 49mm
08	AS-01081-08	BK08	12 x Φ 16mm	96 x 96 x 49mm
09	AS-01081-09	BK09	16 x Φ 16mm	96 x 96 x 49mm
10	AS-01081-10	BK10	12 x Φ 19mm	96 x 96 x 49mm
11	AS-01081-11	BK11	16 x Φ 19mm	96 x 96 x 49mm
12	AS-01081-12	BK12	9 x Φ 20mm	96 x 96 x 49mm
13	AS-01081-13	BK13	9 x Φ 26mm	96 x 96 x 49mm
14	AS-01081-14	BK14	4 x Φ 28mm	96 x 96 x 49mm
15	AS-01081-15	BK15	4 x Φ 40mm	96 x 96 x 49mm
16	AS-01081-16	BK16	49 x 0.5ml tubes	96 x 96 x 49mm
17	AS-01081-17	BK17	25 x 1.5ml tubes	96 x 96 x 49mm
18	AS-01081-18	BK18	25 x 2.0ml tubes	96 x 96 x 49mm
19	AS-01091-01	BK19	96 x 0.2ml tubes	78 x 114 x 26mm
20	AS-01091-02	BK20	96 x 0.2ml microplate	81 x 123 x 19mm
KD200				
No.	Code	Type	Description	Dimensions (mm)
01	AS-06091-01	BD01	12 x Φ 10mm	192 x 96 x 49mm
02	AS-06091-02	BD02	12 x Φ 12mm	192 x 96 x 49mm
03	AS-06091-03	BD03	12 x Φ 13mm	192 x 96 x 49mm
04	AS-06091-04	BD04	12 x Φ 15mm	192 x 96 x 49mm
05	AS-06091-05	BD05	12 x Φ 16mm	192 x 96 x 49mm
06	AS-06091-06	BD06	12 x Φ 19mm	192 x 96 x 49mm
07	AS-06091-07	BD07	12 x Φ 20mm	192 x 96 x 49mm

Note: BK19 and BK20 are special for CarnisMD200-1A